

# CHECK VALVES

EXCELLENCE THROUGH INNOVATION

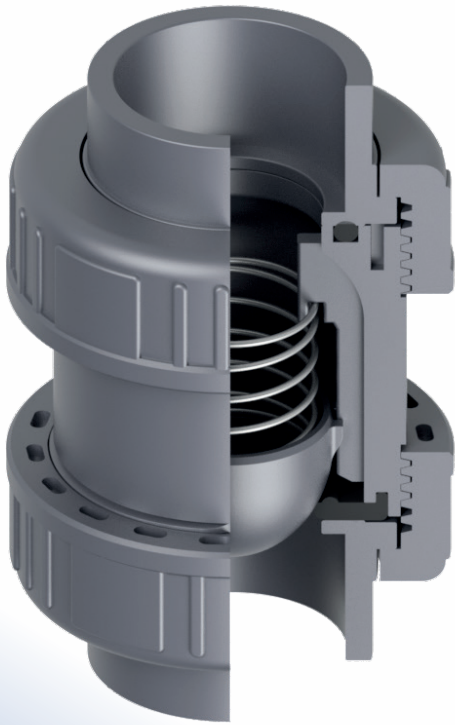
**NEW**



**EFFAST**

# PVC-U Double union check valves CV & CB

## Spring check valves - CV Series



New plunger & dedicated guides

Safe and controlled movement

Shaped gasket with innovative design

Secure seal, even with low pressure

*The ideal solution for:*

- *vertical & horizontal installation*
- *precise closure & silent application*
- *strong vibrations & low back-pressure*

## Ball check valves - CB Series

High-surface machined ball

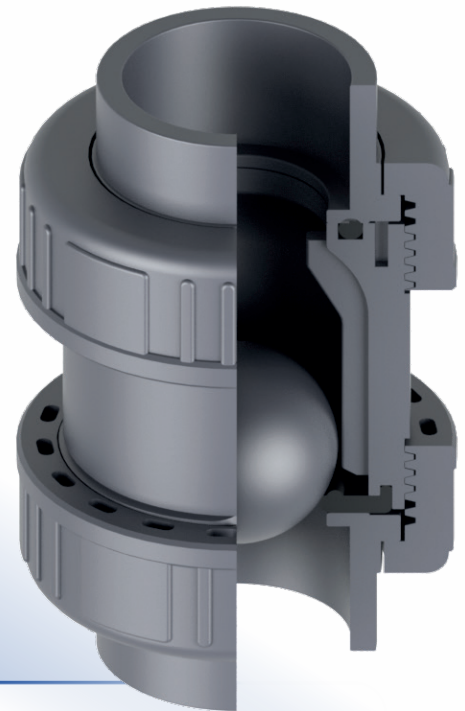
Self cleaning internal valve

Shaped gasket with innovative design

Secure seal, even with low pressure

*The ideal solution for:*

- *vertical installation*
- *dirty fluids*
- *possible use as foot valve too*



### TECHNICAL FEATURES

NOMINAL PRESSURE	PN 16 (20 °C)
DIMENSIONS	DN 15 -, DN 50 (d. 16 -, 63 mm – 1/2" -, 2")
VALVE MATERIAL	PVC-U
SEALS MATERIAL	O-rings: EPDM or FKM
SPRING MATERIAL	Stainless steel. PTFE coated on request
TEMPERATURE	0 °C - 60 °C
CONNECTIONS	Solvent welded metric sockets, solvent welded BS sockets
	BSPP threaded sockets
	On request: solvent welded ASTM or JIS sockets, NPT threaded sockets

# **EFFAST**